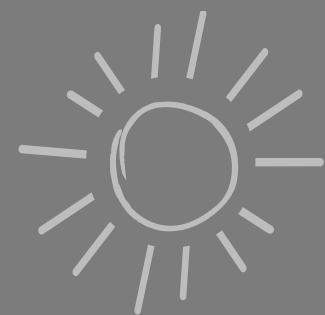


Sustainability

DOWNTOWN MERIDIAN'S existing urban fabric will be preserved and enhanced through responsible low impact development policies. Due diligence will be used in the master planning and development process to utilize and appropriately integrate existing infrastructure without over-burdening them. Strategies will be put in place to ensure that new developments and redevelopment projects are built to last, and are environmentally and economically sustainable.



Destination: *Downtown*



Sustainability Focus Areas

Destination: *Downtown*

FOCUS AREA: ENVIRONMENTAL SUSTAINABILITY

Instilling an ethic for efficient use of resources greatly benefits a community. Downtown Meridian will be a model for sustainable development practices. Policies, strategies, and incentives will be put in place to ensure that new buildings are energy efficient and environmentally friendly.

A greenbelt pathway network throughout the City will also create opportunities for residents and visitors to enjoy the outdoors, while providing an alternative means of transportation. Additional landscape elements will be installed in the downtown and create a pleasant and walkable environment. Landscaped areas and sidewalk planters could also provide opportunities for urban food production.



will also be coordinated between the City and the MDC to capitalize on economies of scale and to jointly develop new plans and decisions, and the roles of each agency will be more clearly defined for the public.

A new “open government” campaign may be considered as a way to increase customer service in local government and to foster a welcoming and friendly atmosphere in Meridian.

The 3D model of downtown will be completed and used as a marketing tool for the MDC and Meridian to attract new investors and in the City’s development review and approval process. The model could also be integrated into GIS databases to provide a comprehensive inventory of parcel data for downtown.

A joint discussion and partnership will be crafted to assess and evaluate fair and appropriate impact fees to reduce unintended barriers to development and investment in downtown Meridian due to high fees and strict requirements.

Destination: *Downtown*

FOCUS AREA: SOCIAL SUSTAINABILITY

Downtown Meridian will become the center for the arts and culture in the Treasure Valley and the entire region. A wide range of events and programs will be staged that will appeal to different segments of the population. Outreach and public school performances, as well as holiday, public interest and other cultural events, will occur in downtown whenever possible.

An atmosphere will be created in the downtown to encourage people to spend time. Retail and shopping activity will be conducted conveniently while street furniture and street trees will complement pedestrian activity.

Meridian will develop an organizational culture of openness and collaboration in the City. This will improve communication, awareness, and trust while assisting local governments in making more fully informed and better decisions.



Destination: *Downtown*

Priority Actions

- Promote and expand the number of cultural events in the community
- Develop a greenbelt pathway network throughout Meridian
- Preserve and protect private property rights and minimize impacts to existing downtown businesses
- Promote and encourage innovative and progressive development
- Incentivize sustainable development